




**Scheda tecnica indumento/Garment technical data sheet. 5090.00**


Identificazione articolo/Item identification					
Cod. comm.le Industrial Starter/ IS commercial item code:	<b>5090</b>	Cod. art. fornitore/ Supplier item code:	<b>BR 07978</b>	Cod. fornitore/ Supplier code:	<b>101109</b>
Cod. colore Industrial Starter/ Industrial Starter colour code:	<b>047</b> ( arancio fluo / blue marino – orange fluo / blue navy )	<input checked="" type="checkbox"/>	Articolo del catalogo/Item from catalogue		
		<input type="checkbox"/>	Articolo personalizzato/Customized item		
	<b>048</b> ( giallo fluo / blue marino – yellow fluo / blue navy )	Codice cliente/Customer code:		<b>N/A</b>	
Nome articolo/Item name:	<b>Parka AV " M-PRO" / " M-PRO" Hi Vi Parka</b>				

Descrizione tecnica dell'articolo/Technical item description			
	Composizione tessuto/ Fabric composition	Colore/colour (Pantone)	Peso del tessuto/ Fabric weight [g/m <sup>2</sup> ]
Tessuto esterno principale 1/ Main outer shell fabric 1	<b>98% poliestere oxford twill antistatico ripstop 132T (300D*300D) 2% fibra dissipativa in carbonio / 98% polyester oxford twill antistatic ripstop 132T (300D*300D) 2% carbon dissipative fiber</b>	<b>Arancio Fluo / Giallo Fluo / Orange Fluo / Yellow Fluo</b>	<b>260 +/- 5%</b>
Tessuto esterno principale 2/ Main outer shell fabric 2	<b>98% poliestere oxford twill antistatico ripstop 132T (300D*300D) 2% fibra dissipativa in carbonio / 98% polyester oxford twill antistatic ripstop 132T (300D*300D) 2% carbon dissipative fiber</b>	<b>Blu marino / Blue navy</b>	<b>260 +/- 5%</b>
Fodera 1 ( collo ) / Lining 1 ( collar)	<b>210T poliestere taffeta / 210T taffeta polyester</b>	<b>Arancio Fluo / Giallo Fluo / Orange Fluo / Yellow Fluo</b>	<b>160 +/- 5%</b>
Fodera 2 ( cappuccio/ corpo/maniche/tasche)/ Lining 2 ( hood/body/sleeves/pocket)	<b>100% cotone FR / 100% FR cotton</b>	<b>Blu marino / Blue navy</b>	<b>160 +/- 5%</b>
Trapuntatura ( corpo/maniche) / Quilting ( body/sleeves)	<b>100% cotone FR / 100% FR cotton</b>	<b>Blu marino / Blue navy</b>	<b>140 +/- 5%</b>

Scheda tecnica indumento/Garment technical data sheet. 5090.00

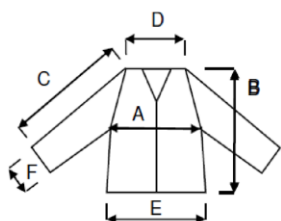
Imbottitura/Padding	100% poliester / 100% polyester	Bianco / White	140 +/- 5%
Bande riflettenti / Reflective Bands	YSL 301 ( altezza cm 5 ) / YSL 301 ( height cm 5 )		
Cerniera centrale / Central zipper	ABS Metal Free	Arancio Fluo / Giallo Fluo / Orange Fluo / Yellow Fluo	
Accessori/Accessories:	<ol style="list-style-type: none"> <li>1. Chiusura centrale con zip metal free coperta da tripla patta anti vento di cui quella esterna con chiusura con velcro FR / Central closure with metal free zipper covered by triple windproof flap of which the outer with FR velcro closure;</li> <li>2. n. 2 tasche torace con sacco interno a scomparsa con patta e chiusura con velcro / n. 2 chest pockets with inner concealed sack closed by flap and velcro closure ;</li> <li>3. n. 2 tasche in vita applicate con patta e chiusura con velcro / n. 2 waist patch pockets closed by flap and velcro closure;</li> <li>4. n. 2 tasche interne con chiusura con velcro / n. 2 inner pcokets with velcro closure;</li> <li>5. Cappuccio foderato a scomparsa , rimovibile / Lined concealed hood, removable;</li> <li>6. Regolazione vita con coulisse / waist adjustment with drawstring;</li> <li>7. Polsini interni anti vento con elastico / Inner windproof elasticized cuffs</li> </ol>		
Loghi e/o ricami/ Logos and/or embroideries:	 		
Taglie/Sizes:	S, M, L, XL, XXL, XXXL		
Imballo/Packages:	n. 1 pz per polybag – n. 5 pz per cartone / n. 1 piece per polybag- n. 5 pcs per export carton		
Istruzioni lavaggio/ Care label:			

Scheda tecnica indumento/Garment technical data sheet. 5090.00

Conformità alle norme CE/Conformity with EC standards			
Cat.DPI/ PPE Category:	III	Norme CE e livelli di protezione/ EC standards and protection levels:	<b>UNI EN ISO 20471:2017 ( Class 3 )</b> <b>UNI EN 343:2019 ( Class 3 1 )</b> <b>UNI EN 14058:2018 ( Class 3 )</b> <b>UNI EN 1149-5:2018 ( permanent )</b> <b>UNI EN 13034 : 2009 ( Type PB/6 )</b> <b>UNI EN 14116:2015 ( Index 1 )</b>  <b>Direttiva ATEX / ATEX Directive</b>  <b>UNI EN ISO 13688:2013</b> <b>UNI EN 14325:2005</b>
Certificato d'esame UE del tipo n° / UE type-examination certificate No.:		CE 0157200007-00-00	Data / Date : 16.01.2020
Organismo notificato / Notified Body :		Centrocot	N°/ No.: 0624
Lingue nota Informativa/ Manufacturer's notes languages:		IT,EN, ES, FR,PL,CZ,GR	

	Misure delle taglie/Size measurements [cm]					
	S	M	L	XL	XXL	XXXL
A. Torace / Chest:	62	64	67	70	73	75
B. Lunghezza tot. / Tot. length:	83	85	88	91	94	97
C. Manica / Sleeves:	60	62	64	66	68	70
D. Shoulder	50	52	54	56	58	60
E. Fondo / Bottom:	62	64	67	70	73	75
F. Polsino / Sleeve opening:	17	17,5	18	18,5	19	20

Disegno e foto/Drawing and photo



NORMA		<b>PERMANENT</b> 					
	<b>UNI EN ISO 14116:2015 INDEX 1</b>	<b>UNI EN 1149-5:2018</b>	<b>UNI EN 13034 2009 TIPO 6</b>		<b>UNI EN ISO 20471:2017 CL. 3</b>	<b>EN 343:2019 3/1</b>	<b>UNI EN 14058:2017 CL. 3</b>
	NORMA 14116 FUOCO LAVAGGI DA CERTIFICATO	NORMA 1149 ANTISTATICO N° LAVAGGI DA CERTIFICATO	NORMA 13034 CHIMICO N° LAVAGGI DA CERTIFICATO	ATEX	NORMA 20471 - HI- VIS N° LAVAGGI DA CERTIFICATO	NORMA 343 PIOGGIA N° LAVAGGI DA CERTIFICATO	NORMA 14058 - FREDDO N° LAVAGGI DA CERTI- FICATO

**PLUS**  
- ESAVALENTE  
- 6 TASCHE  
- ATEX

Vicenza, 17/01/2020



Resp. acquisti/Purchasing manager